

SCOUT PROGRAMS

AT THE

FEES

In-County residents: \$50
for up to 15 people (adults and
children) and \$2 for each additional
person beyond 15 people

Out-of-County residents: \$75
for up to 15 people (adults and
children) and \$3 for each additional
person beyond 15 people

Canoeing instruction: \$20
per scout (In-County and Out-of-
County residents)

SCHEDULING

To schedule a program, call us
at 908 722-1200 Ext. 5332.

Please consider booking your
program at least two to three
weeks prior to your desired
program or meeting date.



*Somerset County
Park Commission*



ENVIRONMENTAL EDUCATION CENTER

190 Lord Stirling Road, Basking Ridge, NJ 07920
908 722-1200 Ext. 5002
www.somersetcountyparks.org



The Somerset County Park Commission Environmental
Education Center is committed to environmental sustainability.
This brochure is printed on 100% recycled paper.
Please do your part and recycle when finished.

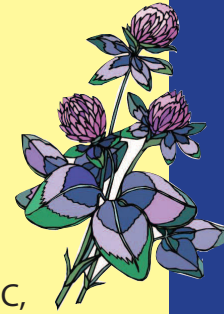


ENVIRONMENTAL EDUCATION CENTER





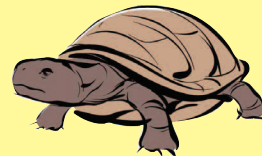
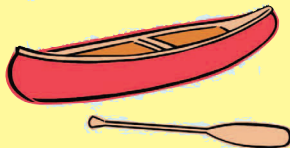
SCOUT PROGRAMS



The Environmental Education Center at Lord Stirling Park provides programming opportunities for Boy and Girl Scout groups. Programs can be conducted at the EEC, any of the other Somerset County Parks or adapted for a visit to your organization's meeting location provided it is within Somerset County. Programming cannot be conducted at private residences.

When scheduling, we request that the group gather the following information prior to calling:

- Any badgework, arrow points, try-its or achievements that pertain to an aspect of the environment at the scout level you are working within.
- General information such as group name, address, contact's home, cell and/or work phone numbers, date choice(s), program time(s), number of children/adults, age or grade level of children, and any special programming considerations you may need.
- Scout programs are typically conducted in an hour's time on any day of the week during the day. To schedule a program, call us at 908 722-1200 Ext. 5332. Please consider booking your program at least two to three weeks prior to your desired program or meeting date.



If you have individualized needs due to a disability, please call 908-722-1200 Ext.5324 and we will be happy to arrange reasonable modifications. Three weeks' notice is required to ensure that appropriate modifications can be provided.

Topic Categories include, but are not limited to:

- General Wildlife
- Aquatic Life
- Geology
- Wildflowers
- Insects
- Reptiles
- Amphibians
- Map & Compass
- Basic Canoeing
- Birds

For: Any level and gender of Scouts

Group Sizes: From 4–15 plus adults

